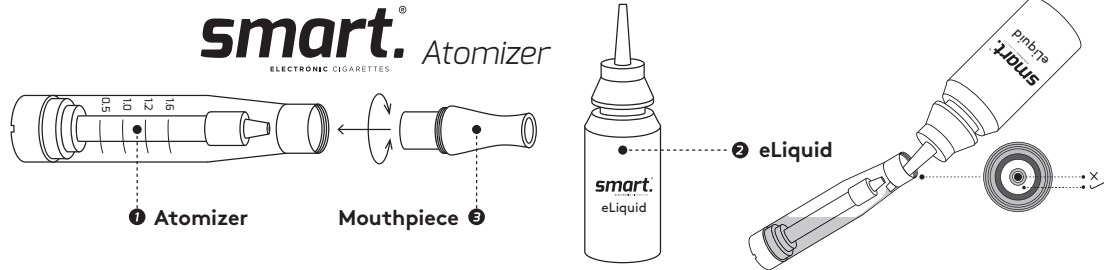


Components

Atomizer (1): This contains the tank that is filled with **eLiquid (2)** as shown in the picture. When powered with a Battery, the Smart® atomizer converts the liquid into vapour that is inhaled through the **mouthpiece (3)**. Atomizers have a limited life-span of use. As a result, they must be replaced once there is a change in vapour taste in order to maintain an optimal vaping experience.

How to use

This atomizer is intended to replace an old used-up atomizer. The 510 thread connector makes this atomizer compatible with all Smart® batteries.



Contra-indications and precautions

This product should be used with a Battery and filled with Smart® eLiquid. Some eLiquids contain nicotine. Since nicotine is a highly addictive substance it is not recommended for use by non-smokers; persons younger than 18 years of age and those demonstrating a sensitivity to nicotine. This device should not be used by those suffering from respiratory/cardiovascular disease and women who are pregnant or lactating.

Vape at your own risk.

Keep out of reach of children. Store in a cool dark place. Smart eCigarettes is not responsible for undesired effects if not used according to these instructions.

Distributor Contact Details (Malta)

Ellul & Ellul Holdings Ltd
Office No.3 at
The Peak Business Centre
St. Catherine's Street,
Attard. ATD 2503

Enquiries:
sales@ellulandellul.com

www.smartecig.net



smart.[®]
ELECTRONIC CIGARETTES

Manufactured in the PRC under a
European trademark license.



CE RoHS